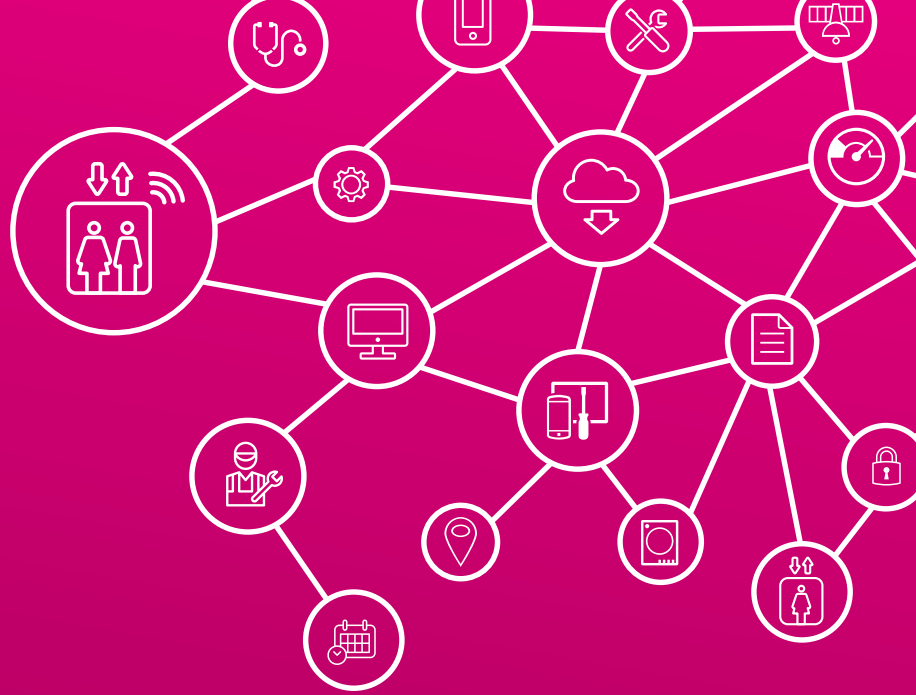


PREDICTIVE MAINTENANCE



LIFE IS FOR SHARING.

DIGITALIZATION IS A FACT!

HOW CAN YOU USE IT TO SHIFT FROM REACTIVE TO INTELLIGENT MAINTENANCE?



YOUR BUSINESS TODAY

- Time-based check-ups
 - Large efforts to guarantee security
 - Expensive service
-
- **> 50%** of global elevator revenues is maintenance, accounting for 30 Bn € in 2020
 - **190 MILLION HOURS** cumulative time the world's elevators are "unavailable" due to service maintenance



YOUR DIGITIZED BUSINESS

- Real-time monitoring
 - On-site visits only when necessary
 - Repair in time
-
- **> 30% COST SAVINGS** estimated through predictive maintenance
 - **UP TO 50% LESS SERVICE VISITS**
 - Reduced outages by up to 50%
 - Decrease elevator down time
 - Increase customer satisfaction and elevator safety

OUR ANSWER: PREDICTIVE MAINTENANCE SMART SENSORS



STANDARDIZED | SECURE | END-TO-END



... All-in-Package from hardware, licensing over integration and operation to service management from one service provider.



... intelligent sensors and real-time cloud-based evaluation of operation-parameters to streamline the service approach.



... end-to-end service and operations with security made in Germany, global reach 24/7 support.



... reduce existing costs, allow for new revenue streams and increase margins. Without any capital invest.

UP TO 30% COST SAVINGS ON MAINTENANCE

PREDICTIVE MAINTENANCE

WE OFFER 360° SERVICE



Deutsche Telekom brings all components for end-to-end IoT solutions – a 360° service from hardware and connectivity over operations in highly secure data centers to system integration and consulting. A unique value proposition for enterprise customers of all sizes.

**ONE-STOP-SHOP FOR
END-TO-END SOLUTIONS**

**SECURE CLOUD IN GERMAN
DATA CENTERS**

**BEST NETWORK –
LOCALLY AND GLOBALLY**

**BEST PLATFORMS & BEST-
OF-BREED PARTNERS**

Please contact: **DIGITALDIVISION@TELEKOM.DE**

