

# Deutsche Telekom Group structure.

| Chairman of the Board of Management                          | Board Member Product Marketing         | Board Member Sales and Service | Board Member International | Board Member Networks, Purchasing, Environmental Protection | Board Member Technology and Services | Board Member Human Resources and Legal Affairs | Board Member Finance, Controlling  |
|--|--|--------------------------------|----------------------------|---|--------------------------------------|--|------------------------------------|
| Dr. Ron Sommer   | Detlev Buchal                          | Josef Brauner                  | Jeffrey A. Hedberg         | Gerd Tenzer   | Dr. Hagen Hultzsch                   | Dr. Heinz Klinkhammer                          | Dr. Karl-Gerhard Eick              |
| Group Strategy   | Data Communications                    | Sales and Service              | International Business     | Networks  | Information Management               | Human Resources Management                     | Investor Relations                 |
| Group Organization   | Multimedia                             |                                |                            | Group Purchasing  | Innovation Management                | Human Resources Services                       | Group Controlling and Planning     |
| Government Relations, Competition Policy, Regulatory Affairs | Information and Communications Systems |                                |                            | Carrier Services  |                                      | Human Resources Development                    | Billing, Accounts Receivable       |
| Group Communications   | Network Communications                 |                                |                            | Broadcasting and Broadband Cable                            |                                      | Group Security                                 | Taxes, Risk Management             |
| Top Management Staff   | Value-Added Services                   |                                |                            |   |                                      | Legal Affairs                                  | Finance                            |
| Group Auditing   | Terminal Equipment                     |                                |                            |   |                                      |  | International Financing            |
| Mobile Communications  |  |                                |                            |   |                                      |  | Financial Accounting and Reporting |
|  |  |                                |                            |   |                                      |  | Real Estate and Buildings          |

# Selected financial data of the Deutsche Telekom Group at a glance.



| Earnings position (billions of €)                           | Change <sup>a</sup> | 1999             | 1998             | 1997             | 1996             | 1995              | 1994 <sup>b</sup> |
|---|---------------------|------------------|------------------|------------------|------------------|-------------------|-------------------|
| Net revenue   | 0.9%                | 35.5             | 35.1             | 34.5             | 32.3             | 30.5 <sup>c</sup> | 32.6              |
| Changes in inventories and other own capitalized costs      | -4.3%               | 0.9              | 1.0              | 1.6              | 1.7              | 1.7               | 1.9               |
| Other operating income                                      | -9.6%               | 1.9              | 2.1              | 1.9              | 2.0 <sup>d</sup> | 1.1               | 1.0               |
| Goods and services purchased                                | 35.0%               | 8.4              | 6.2              | 6.2              | 5.2              | 4.9               | 4.7               |
| Personnel costs   | 0.4%                | 9.2              | 9.2              | 9.4              | 9.6              | 9.4               | 9.3               |
| Depreciation and amortization                               | -6.3%               | 8.5 <sup>e</sup> | 9.0 <sup>e</sup> | 9.5 <sup>e</sup> | 9.0 <sup>e</sup> | 7.9               | 7.5               |
| Other operating expenses                                    | 13.9%               | 6.1              | 5.4              | 5.2              | 4.9              | 4.9               | 4.2               |
| Total operating expenses <sup>f</sup>                       | 8.0%                | 32.2             | 29.8             | 30.3             | 28.7             | 27.1              | 25.7              |
| Financial income (expense) net                              | -12.1%              | -2.9             | -3.3             | -4.0             | -3.9             | -4.2              | -4.1              |
| Results from ordinary business activities                   | -37.6%              | 3.2              | 5.1              | 3.7              | 3.4              | 5.3               | 5.7               |
| Extraordinary income (losses)                               | -                   | -0.2             | -                | -                | -1.3             | -0.7              | -0.2              |
| Taxes, Levy to the Federal Republic of Germany <sup>9</sup> | -46.5%              | 1.4              | 2.7              | 1.9              | 1.1              | 1.9               | 2.5               |
| Net income  | -44.1%              | 1.3              | 2.2              | 1.7              | 0.9              | 2.7               | 1.8               |

| Assets and liabilities (billions of €)             |       | 1999 | 1998 | 1997 | 1996 | 1995 | 1994 |
|--|-------|------|------|------|------|------|------|
| Noncurrent assets                                  | 23.2% | 82.0 | 66.5 | 70.0 | 73.8 | 71.2 | 71.2 |
| Current assets, prepaid expenses, deferred charges | -0.9% | 12.6 | 12.8 | 13.2 | 15.3 | 10.7 | 14.7 |
| Shareholders' equity                               | 42.4% | 35.7 | 25.1 | 24.6 | 23.8 | 12.7 | 9.9  |
| Accruals   | 11.2% | 9.3  | 8.3  | 7.7  | 7.6  | 6.6  | 5.8  |
| Debt   | 6.0%  | 42.3 | 39.9 | 44.9 | 51.1 | 56.4 | 64.1 |
| Other liabilities and deferred income              | 23.2% | 7.3  | 6.0  | 6.0  | 6.6  | 6.2  | 6.1  |
| Balance sheet total                                | 19.4% | 94.6 | 79.3 | 83.2 | 89.1 | 81.9 | 85.9 |

| Financing (billions of €)                            |        | 1999  | 1998 | 1997 | 1996  | 1995 | 1994  |
|--|--------|-------|------|------|-------|------|-------|
| Net cash provided by operating activities            | -28.9% | 9.6   | 13.5 | 11.6 | 11.4  | 12.1 | 12.3  |
| Net cash used for investing activities               | 148.8% | -18.7 | -7.5 | -5.4 | -13.0 | -6.8 | -14.8 |
| Net cash provided by (used for) financing activities | 217.2% | 8.0   | -6.8 | -7.0 | 3.5   | -7.8 | 5.7   |
| Capital expenditures <sup>h</sup>                    | 24.7%  | 6.0   | 4.8  | 6.8  | 8.6   | 7.5  | 9.9   |

| Figure in accordance with U.S. GAAP (billions of €) |        | 1999 | 1998 | 1997 | 1996 | 1995 | 1994 |
|---|--------|------|------|------|------|------|------|
| Net income  | -32.0% | 1.5  | 2.2  | 1.3  | 1.3  | 2.9  | 4.1  |
| Balance sheet total                                 | 19.6%  | 97.5 | 81.5 | 84.9 | 91.4 | 84.3 | 88.0 |
| Total long-term liabilities                         | -0.6%  | 39.4 | 39.7 | 45.3 | 51.3 | 56.5 | 62.9 |
| Shareholders' equity                                | 40.0%  | 37.6 | 26.9 | 26.1 | 25.9 | 15.1 | 12.3 |

| Ratios   |        | 1999              | 1998  | 1997  | 1996  | 1995  | 1994  |
|--|--------|-------------------|-------|-------|-------|-------|-------|
| Employees balance sheet date (thousands) <sup>j</sup>                | -3.9%  | 172               | 179   | 191   | 201   | 213   | 229   |
| Employees average for the year (thousands) <sup>j</sup>              | -5.9%  | 175               | 186   | 197   | 208   | 220   | 231   |
| Dividend per share/ADS (€)   | 1.6%   | 0.62 <sup>j</sup> | 0.61  | 0.61  | 0.31  | 0.31  | -     |
| Earnings per share/ADS in accordance with HGB (€) <sup>k</sup>       | -47.6% | 0.43              | 0.82  | 0.62  | 0.43  | 1.33  | 0.91  |
| Earnings per share/ADS in accordance with U.S. GAAP (€) <sup>k</sup> | -34.6% | 0.53              | 0.81  | 0.46  | 0.62  | 1.40  | 2.00  |
| Revenue per employee (thousands of €) <sup>l</sup>                   | 2.2%   | 186               | 182   | 169   | 150   | 139   | 141   |
| Equity ratio (%) <sup>m</sup>  | 21.0%  | 35.7%             | 29.5% | 27.5% | 25.8% | 14.7% | 11.5% |

<sup>a</sup> On the basis of the more exact figures expressed in millions

<sup>b</sup> Figures adjusted retroactively to the accounting principles applied to Deutsche Telekom AG since January 1, 1995

<sup>c</sup> Including pro-forma value-added tax. Adjusted for VAT, revenue would have been € 33.8 million

<sup>d</sup> Including one-time value-added tax refund amounting to € 338 million

<sup>e</sup> Including depreciation of value-added tax capitalized prior to January 1, 1996

<sup>f</sup> Without the changes in the composition of the Group (in particular MATÁV, DT Mobile Holdings (One 2 One), max.mobil. and TeleCash), amounts would have been lower by € 3.0 bn (1999), € 1.0 bn (1998), € 1.0 bn (1997) and € 0.8 bn (1996)

<sup>9</sup> In 1995, the levy to the Federal Republic was paid for the last time with the Company being exempt almost fully from tax. Since January 1, 1996, the Company has been subject to normal corporate taxation.

<sup>h</sup> In accordance with statement of cash flows.

<sup>i</sup> Full-time employees, without trainees/student interns and changes in the composition of the Group (in particular MATÁV, DT Mobile Holdings (One 2 One), max.mobil. and TeleCash).

<sup>j</sup> Proposed dividend

<sup>k</sup> Based on dividing net income by the weighted average number of ordinary bearer shares outstanding. The share/ADS ratio is 1:1. In 1996, after giving effect to the 10:1 stock split and the issuance of shares from retained earnings on July 1, 1996. Pro forma for 1994.

<sup>l</sup> Average number of employees for the year without trainees/student interns and without changes in the composition of the Group (in particular MATÁV, DT Mobile Holdings (One 2 One), max.mobil. and TeleCash).

<sup>m</sup> Without amounts proposed for dividend payment, which are treated as short-term debt.

# Deutsche Telekom's major subsidiaries and associated companies.

## Data communications

|          |  |
|----------|--|
| 100.00 % | T-Data Gesellschaft für Datenkommunikation mbH, Bonn                                     |
| 51.00 %  | DATUS elektronische Informationssysteme GmbH, Aachen                                     |
| 100.00 % | DeTeLine Deutsche Telekom Kommunikationsnetze GmbH, Berlin                               |
| 100.00 % | DeTeLine Budapest Telekommunikations-Dienstleistungsgesellschaft mbH, Budapest (Hungary) |
| 25.00 %  | Joint Uzbek-german Telecommunications Company Chirkom, Chirchik (Usbekistan)             |

## Network communications

|         |  |
|---------|--|
| 19.97 % | VocalTec Communications Ltd., Herzeliya (Israel) |
|---------|--|

## Mobile communications

|          |   |
|----------|---|
| 100.00 % | T-Mobile International AG, Bonn   |
| 100.00 % | DeTeMobil Deutsche Telekom MobilNet GmbH, Bonn  |
| 91.00 %  | max.mobil. Telekommunikation Service GmbH, Vienna (Austria)                           |
| 50.00 %  | DDG Gesellschaft für Verkehrsdaten mbH, Düsseldorf                                    |
| 45.94 %  | MTS, CJSC Mobile TeleSystems gAG, Moscow (Russia)                                     |
| 41.43 %  | RADIOMOBIL a.s., Prague (Czech Republic) via Cmobil B.V., Amsterdam (Netherlands)     |
| 100.00 % | Deutsche Telekom Mobile Holdings Ltd., London (Great Britain)                         |
| 100.00 % | One 2 One Partnership (One 2 One) Borehamwood/Hertfordshire (Great Britain)           |
| 100.00 % | MediaOne International B.V. Eindhoven (Netherlands)                                   |
| 49.00 %  | WESTEL 900 GSM Mobil Távközlési Rt., Budapest (Hungary)                               |
| 49.00 %  | Westel Rádiótelefon Kft. Budapest (Hungary)   |
| 45.00 %  | PTC, Polska Telefonía Cyfrowa Sp.z o.o., Warsaw (Poland) (via MediaOne and DeTeMobil) |

## Multimedia

|          |   |
|----------|---|
| 100.00 % | T-Online International AG, Darmstadt                  |
| 51.00 %  | "T-Online.at" Internet Service GmbH, Vienna (Austria) |
| 25.00 %  | WSI Webseek Infoservice GmbH & Co. KG, Hamburg        |
| 25.00 %  | Booxtra GmbH & Co. KG, Augsburg                       |
| 100.00 % | TeleCash Kommunikations-Service GmbH, Stuttgart       |
| 34.00 %  | ESTATE NET Internet Marketing GmbH, Hamburg           |
| 25.00 %  | secunet Security Network Aktiengesellschaft, Essen    |

## Value-added services

|          |   |
|----------|---|
| 100.00 % | DeTeMedien, Deutsche Telekom Medien GmbH, Frankfurt/Main                |
| 25.10 %  | DAV Deutscher Adressbuchverlag für Wirtschaft und Verkehr GmbH, Roßdorf |
| 15.00 %  | GfT Gesellschaft für Telekommunikation mbH, Nuremberg                   |
| 100.00 % | Deutsche Telekom CardService GmbH, Nuremberg                            |
| 50.00 %  | TEGARON Telematics GmbH, Bonn   |

## Terminal equipment

|         |                                     |
|---------|-------------------------------------|
| 25.50 % | Electrocycling GmbH, Goslar         |
| 25.00 % | Electrocycling Anlagen GmbH, Goslar |

## Information and communications systems

|         |  |
|---------|--|
| 50.00 % | EUCOM Gesellschaft für Telekommunikations-Mehrwertdienste mbH, Saarbrücken |
|---------|--|

## Broadcasting and broadband cable

|          |   |
|----------|---|
| 100.00 % | DeTeKabelService Deutsche Telekom Kabel Service GmbH, Bonn                                  |
|          | 19 regional cable companies   |
| 100.00 % | Kabel Deutschland GmbH, Bonn  |
|          | 9 regional cable companies  |
| 100.00 % | MSG MediaServices GmbH, Munich  |
| 45.00 %  | Bayern Digital Radio GmbH, Munich   |
| 45.00 %  | Digital Radio Saar GmbH (i.G.), Saarbrücken   |
| 45.00 %  | Digital Radio Südwest GmbH, Stuttgart   |
| 45.00 %  | Digital Radio West GmbH, Cologne  |
| 24.00 %  | KABELCOM Braunschweig Gesellschaft für Breitbandkabel-Kommunikation mbH, Braunschweig       |
| 24.00 %  | KABELCOM Wolfsburg Gesellschaft für Breitbandkabel-Kommunikation mbH, Wolfsburg             |
| 24.00 %  | KABELCOM Osnabrück Beteiligungsgesellschaft für Breitbandkabel-Kommunikation mbH, Osnabrück |
| 22.50 %  | Deutsche Datenrundfunk Studien- und Entwicklungsgesellschaft mbH, Oberhausen                |
| 16.67 %  | SES Société Européenne des Satellites S.A., Betzdorf (Luxembourg)                           |

## Networks

|          |   |
|----------|---|
| 100.00 % | DeTeSat Deutsche Telekom Gesellschaft für Satellitenkommunikation mbH, Bonn   |
| 100.00 % | EuroDATA KFT. – EuroDATA Kommunikációs Szolgáltató és Tanácsadó, Korlátolt Felelősségű Társaság, Budapest (Hungary) |
| 40.00 %  | ZAO Moszkowskij Teleport, Moscow (Russia)   |
| 8.43 %   | European Telecommunications Satellite Organizations "EUTELSAT", Paris (France)                                      |
| 4.29 %   | INMARSAT HOLDINGS LTD, London (Great Britain)   |
| 10.20 %  | ICO Global Communications (Holdings) Ltd., Hamilton (Bermuda)   |
| 3.45 %   | International Telecommunications Satellite Organizations "Intelsat", Washington D.C., Virginia (USA)                |
| 3.10 %   | New Skies Satellites N.V., Amsterdam (Netherlands)  |

## Sales and Service

|          |   |
|----------|---|
| 100.00 % | DeTeSystem Deutsche Telekom Systemlösungen GmbH, Frankfurt/Main |
| 100.00 % | EUROBELL PLC, London/Crawley (Great Britain)                    |
| 49.00 %  | Deutsche Telepost Consulting GmbH (DETECON) Bonn                |
| 15.00 %  | Bremen Online Services GmbH & Co. KG, Bremen                    |

■ Direct investment of Deutsche Telekom AG

■ Indirect investment of Deutsche Telekom AG



## International

|          |  |
|----------|--|
| 100.00 % | Deutsche Telekom Inc., New York N.Y. (USA)   |
| 100.00%  | Deutsche Telekom (Canada) Inc., Toronto (Canada)   |
| 100.00%  | T-Access Inc., Red Bank N.J. (USA)   |
| 100.00 % | NAB Nordamerika Beteiligungs Holding GmbH, Bonn  |
| 10.00 %  | Sprint Corp., Kansas City (USA)  |
| 100.00 % | Deutsche Telekom S.A.R.L., Paris (France)  |
| 100.00 % | Deutsche Telekom Asia Pte. Ltd., Singapore (Singapore)   |
| 100.00 % | Deutsche Telekom K.K., Tokyo (Japan)   |
| 100.00 % | Deutsche Telekom Japan K.K., Tokyo (Japan)   |
| 100.00 % | Deutsche Telekom Ltd., London (Great Britain)  |
| 100.00 % | Deutsche Telekom gAG, Moscow (Russia)  |
| 100.00 % | Consultancy by Technicus Corporation, Cebu City (Philippines)  |
| 100.00 % | Technicus Consultancy Sdn. Bhd., Kuala Lumpur (Malaysia)   |
| 100.00 % | DeTeAsia Holding GmbH, Bonn  |
| 100.00 % | Deutsche Telekom Holdings Limited, London (Great Britain)  |
| 50.00 %  | DTFT Limited, London (Great Britain)   |
| 50.00 %  | MetroHoldings Limited, London (Great Britain)  |
| 100.00%  | SIRIS S.A.S., Paris (France)   |
| 82.00%   | Infonet Network Services Deutschland GmbH, Frankfurt/Main  |
| 50.00%   | DT-FT Italian Holding GmbH, Bonn   |
| 49.00%   | Wind Telecomunicazioni S.p.A., Rome (Italy)  |
| 50.00%   | MagyarCom Holding GmbH, Bonn   |
| 59.58%   | MATÁV Rt., Budapest (Hungary)  |
| 50.00%   | MAGYARCOM SZOLGÁLTATÓ KFT (MagyarCom Services KFT), Budapest (Hungary)                                 |
| 35.00%   | Hrvatske telekomunikacije d.d., Zagreb (Croatia)   |
| 22.82%   | Dial – The Israeli Company for International Communications Services Ltd., Tel Aviv (Israel)           |
| 46.00%   | BARAK I.T.C., Tel Aviv (Israel)  |
| 19.50%   | Utel Ukrainian Telecom (Utel J.V.), Kiev (Ukraine)   |
| 16.33%   | Ukrainian-German-Dutch-Danish Joint Venture Ukrainian Mobile Communications (UMC J.V.), Kiev (Ukraine) |
| 2.00%    | France Télécom S.A., Paris (France)  |

## Information and innovation management

|         |   |
|---------|---|
| 100.00% | T-Nova Deutsche Telekom Innovationsgesellschaft mbH, Bonn   |
| 100.00% | Multimedia Software GmbH Dresden, Dresden   |
| 100.00% | DeTeCSM, Deutsche Telekom Computer Service Management GmbH, Darmstadt                                     |
| 30.00%  | DANET- Gesellschaft für Beratung und Software-Entwicklung mbH, Weiterstadt                                |
| 17.98%  | EURESCOM – European Institute for Research and Strategic Studies in Telecommunications – GmbH, Heidelberg |

## Billing and accounts receivable

|         |  |
|---------|--|
| 100.00% | SAF – Servicegesellschaft für automatisierten Forderungseinzug mbH, Heidelberg |
| 100.00% | SolvenTec GmbH, Hanover  |

## Real estate

|         |  |
|---------|--|
| 100.00% | DeTe Immobilien, Deutsche Telekom Immobilien und Service GmbH, Münster |
|---------|--|

## Other subsidiaries and associated companies

|         |   |
|---------|---|
| 100.00% | DeTeAssekuranz – Deutsche Telekom Assekuranzvermittlungsgesellschaft mbH, Monheim       |
| 100.00% | T-Telematik Venture Holding GmbH (T-Venture), Bonn                                      |
| 100.00% | 1. T-Telematik Venture Beteiligungsgesellschaft mbH (1. T-TVB), Bonn                    |
| 100.00% | 2. T-Telematik Venture Beteiligungsgesellschaft mbH (2. T-TVB), Bonn                    |
| 50.00%  | CT-Beteiligungsverwaltungsgesellschaft mbH, Bonn  |
| 50.00%  | Global IT-Venture Holding N.V., Amsterdam (Netherlands)                                 |
| 25.00%  | Bonn-Innova GmbH & Co. Venture-Beteiligungs KG (BIVB), Bonn                             |
| 100.00% | Deutsche Telekom International Finance B.V., Amsterdam (Netherlands)                    |
| 100.00% | Deutsche Telekom Holding B.V., Amsterdam (Netherlands)                                  |
| 7.69%   | BayernOnline-Kongress GbR mit beschränkter Haftung, Munich                              |
| 5.03%   | EXPO-Beteiligungsgesellschaft der Deutschen Wirtschaft mbH & Co. VerwaltungsKG, Hanover |
| 20.00%  | EXPO 2000 Hannover GmbH, Hanover  |
| 2.92%   | Trägergesellschaft Deutscher Pavillion GmbH (TDP), Hanover                              |

# Deutsche Telekom's most important statistical data at a glance.

| Figures on telephony   | End 1999 | 1998     | 1997               | 1996    | 1995    | 1994    | 1993    | 1992             | 1991             | 1990             |
|--|----------|----------|--------------------|---------|---------|---------|---------|------------------|------------------|------------------|
| Telephone lines (millions) <sup>a</sup>  | 47.8     | 46.5     | 45.2               | 44.2    | 42.0    | 39.9    | 37.5    | 35.6             | 33.7             | 32.0             |
| Standard analog lines (millions)   | 34.5     | 36.4     | 37.8               | 39.0    | 39.2    | 38.2    | 36.7    | 35.2             | 33.5             | 31.9             |
| ISDN channels (thousands) <sup>b</sup>   | 13,320.4 | 10,093.5 | 7,341.3            | 5,203.4 | 2,743.9 | 1,669.2 | 842.8   | 402.9            | 161.0            | 84.1             |
| ISDN basic access lines (thousands)  | 5,442.4  | 3,996.9  | 2,831.2            | 1,918.3 | 846.4   | 460.5   | 217.2   | 98.4             | 41.4             | 14.5             |
| ISDN primary rate access lines (thousands)   | 81.2     | 70.0     | 56.0               | 45.6    | 35.0    | 24.9    | 13.6    | 6.9              | 2.6              | 1.8              |
| Directory assistance calls (millions)  | 323      | 406      | 568                | 574     | 606     | 563     | 475     | 366 <sup>c</sup> | 352 <sup>c</sup> | 324 <sup>c</sup> |
| National phone calls (billions)  | 50.6     | 52.7     | 52.7               | 50.7    | 52.3    | 51.0    | 49.2    | 44.6             | 41.0             | 35.4             |
| International phone calls (millions)   | 1,089    | 1,367    | 1,497 <sup>d</sup> | 1,420   | 1,450   | 1,384   | 1,180   | 1,012            | 922              | 797              |
| <b>Data communications</b>   |          |          |                    |         |         |         |         |                  |                  |                  |
| T-Online subscribers (thousands)   | 4,151    | 2,699    | 1,919              | 1,354   | 965     | 709     | 497     | 340              | 302              | 260              |
| T-Online log-ins (millions)  | 1,535.3  | 838.1    | 492.2              | 310.1   | 173.5   | 129.0   | 104.0   | 87.8             | 75.6             | 63.2             |
| Datex-P dedicated connections (thousands)  | 62.4     | 85.7     | 95.3               | 81.4    | 92.4    | 92.6    | 86.5    | 79.5             | 69.3             | 56.5             |
| Datex-P dial-in connections (thousands)  | 52.3     | 50.9     | 55.5               | 63.4    | -       | -       | -       | -                | -                | -                |
| Access locations T-ATM   | 54       | 42       | 42                 | -       | -       | -       | -       | -                | -                | -                |
| Access locations Datex-M   | 76       | 76       | 71                 | 42      | 42      | 12      | -       | -                | -                | -                |
| FrameLink Plus access lines  | 12,625   | 7,146    | 2,382              | 631     | -       | -       | -       | -                | -                | -                |
| City-Netz  | 38       | 36       | 28                 | 13      | 3       | -       | -       | -                | -                | -                |
| <b>Mobile communications</b>   |          |          |                    |         |         |         |         |                  |                  |                  |
| T-C-Tel customers (thousands)  | 165      | 366      | 476                | 532     | 648     | 724     | 794     | 772              | 533              | 274              |
| T-D1 customers (thousands)   | 9,067    | 5,474    | 3,276              | 2,156   | 1,482   | 887     | 481     | 69               | -                | -                |
| Paging customers<br>(Eurosignal, Scall, Cityruf, Skyper) (thousands)   | 519      | 701      | 965                | 1,002   | 836     | 549     | 465     | 414              | 342              | 270              |
| Modacom customers (thousands)  | 24       | 27       | 24                 | 15      | 9       | 7       | 0.4     | -                | -                | -                |
| <b>Cable television</b>  |          |          |                    |         |         |         |         |                  |                  |                  |
| Households connected (millions)  | 17.8     | 17.7     | 17.3               | 16.7    | 15.8    | 14.6    | 13.5    | 11.8             | 9.9              | 8.1              |
| <b>Network</b>   |          |          |                    |         |         |         |         |                  |                  |                  |
| Copper (km thousands) <sup>d</sup>   | 1,450.2  | 1,452.3  | 1,455.7            | 1,446.1 | 1,410.8 | 1,399.9 | 1,367.6 | 1,204.1          | 1,330.7          | 1,309.7          |
| Fiber optic (km thousands) <sup>d</sup>  | 162.5    | 157.4    | 150.6              | 137.6   | 124.6   | 114.7   | 102.3   | 67.2             | 54.5             | 40.0             |
| <b>Field organization</b>  |          |          |                    |         |         |         |         |                  |                  |                  |
| Branch offices   | 78       | 118      | 118                | 118     | 118     | 120     | 121     | 121              | 123              | 123              |
| T-Punkt sales outlets  | 563      | 578      | 455                | 416     | 364     | 354     | 320     | 292              | 257              | 192              |
| <sup>a</sup> Standard analog lines including public telephones and ISDN channels in operation.                     |          |          |                    |         |         |         |         |                  |                  |                  |
| <sup>b</sup> Two ISDN channels are available per basic access line, 30 ISDN channels per primary rate access line. |          |          |                    |         |         |         |         |                  |                  |                  |
| <sup>c</sup> Figure refers to western Germany only.  |          |          |                    |         |         |         |         |                  |                  |                  |
| <sup>d</sup> Updated figure.   |          |          |                    |         |         |         |         |                  |                  |                  |



The 1999 financial year.

Touching your life today.  
Making tomorrow's ideas  
work now.



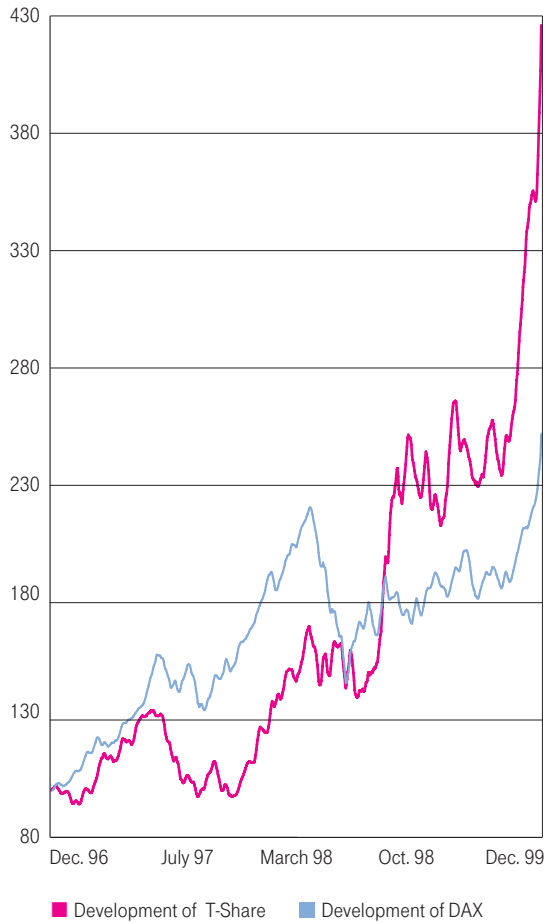
T . . .

### T-Share as compared to DAX

between November 18, 1996 and December 30, 1999.

Sliding average (7 days).

Xetra closing prices indexed.

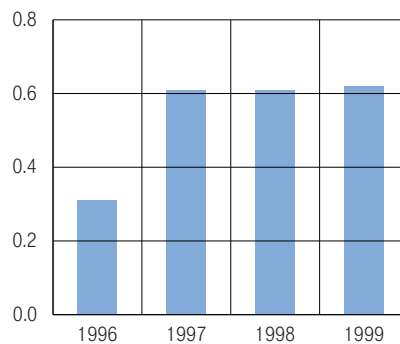


### 2000/2001 Financial Calendar

|   |                |
|---|----------------|
| Press conference on the 1999 financial statements | April 19, 2000 |
| Analysts' meeting                                 | April 19, 2000 |
| Annual shareholders' meeting                      | May 25, 2000   |
| 2000 Group half-year report                       | August 2000    |
| Press conference on the 2000 financial statements | April 2001     |
| Annual shareholders' meeting                      | May 29, 2001   |

### Dividends per share/ADS

(in €)



1996: 0.31

1997: 0.61

1998: 0.61

1999: 0.62